



**HENLEY**  
PROPERTY DEVELOPERS LIMITED

# **KAWEMPE BUSINESS PARK**



**AVAILABLE  
FOR RENT**

## **MODERN WAREHOUSE & OFFICE SET-UP FACILITY**



**Henley Property Developers Limited** – one of the leading Property Developer and Management Company is coming up with another exciting modern business park project in Kawempe after successful completion of Ntinda Business Park of 12,000 SQM Project and 5,500 SQM Business park in Old Port Bell Road, Kampala.

Kawempe is one of the most recognized and busy town in Kampala. As you may be aware that Kawempe is well connected to Jinja, Northern Bypass and is most suitable for the Warehousing, Manufacturing, Distribution Godawn and storage activities. The place is also close to the city center and thus become a best place to cater the immediate need of city Centre.

Project site is near Roko Construction and near RIHAM in Kawempe.

Total Development is of **8,000 SQM** Warehousing facilities.

These warehouses are well planned and consist of two levels with independent access to individual's business set-up.

## OFFICE

- Office space is within the range of 36.5 to 60.2 square meters secured for administrative and support activities. Office space is contained with the toilet block.
- The observation window will help to monitor the activities taking place in the warehouse.

## WAREHOUSE

- Warehouses are in the range of 1000 Square Meters each, with flexibility of customization. You can also customize the warehouse as per your requirement.
- The design will also allow someone to establish manufacturing activity.



## **FACILITIES:-**

- ★ Stand-by Power back-up Generator
- ★ Fire Hydrant water pipeline & Fire Extinguisher
- ★ Warehouse with LED lights & 6 Meter Height
- ★ Fire Smoke Detector & Siren
- ★ Common washroom facilities for Driver/Loaders
- ★ 24x7 security guard
- ★ CCTV surveillance to ensure the safe environment is available.
- ★ Dedicated parking for Individual Tenants & clients



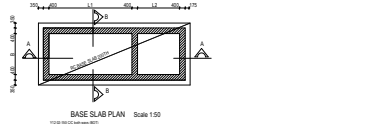
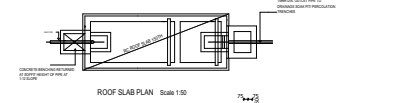
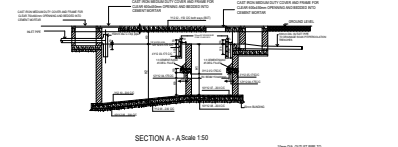
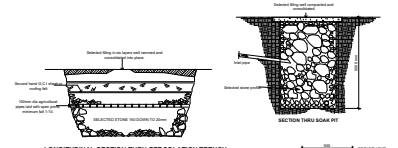
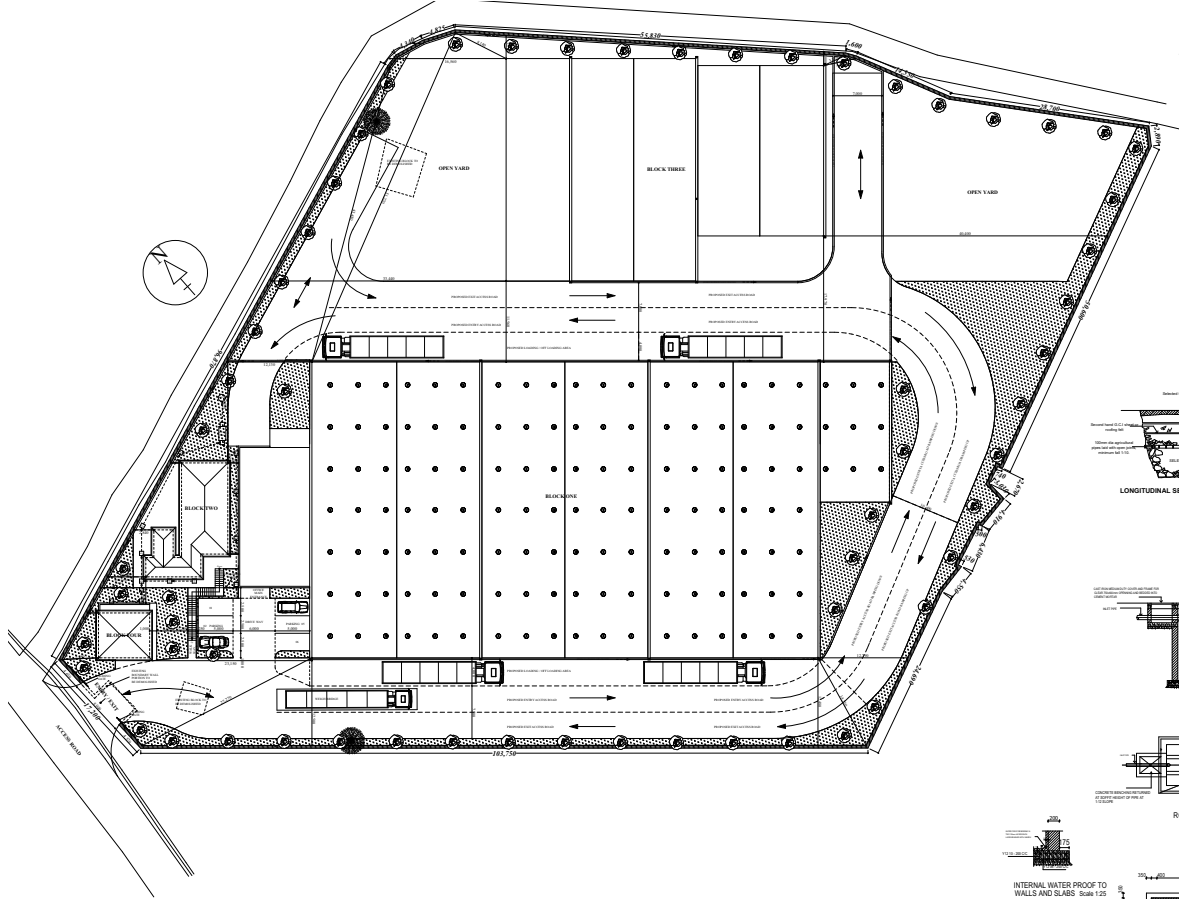
**INSIDE WAREHOUSE**



## INSIDE WAREHOUSE



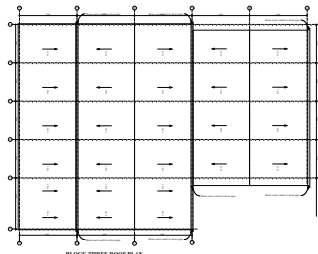
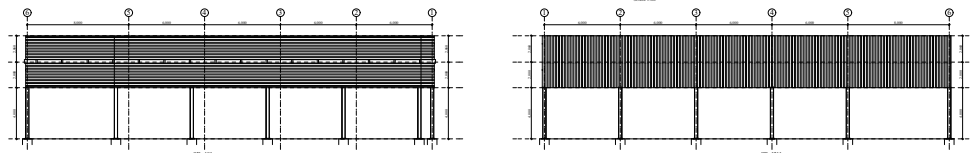
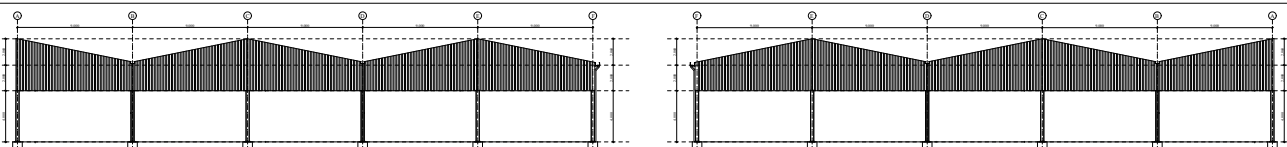
# SITE LAYOUT PLAN



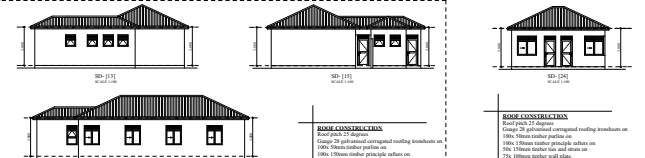
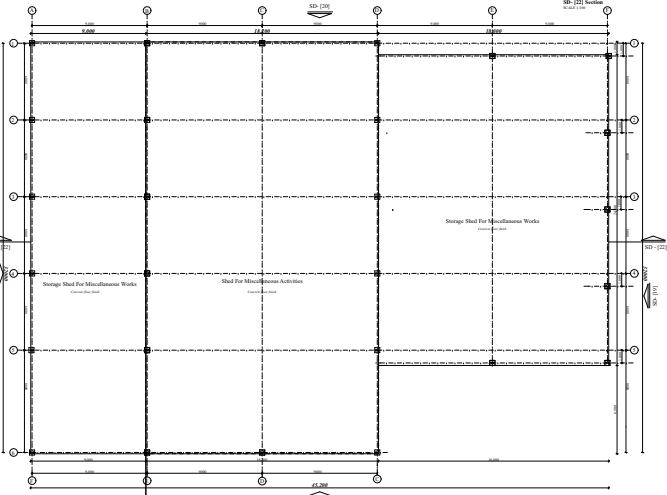
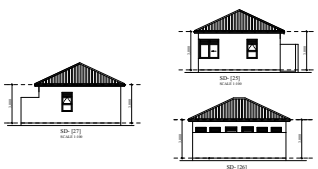
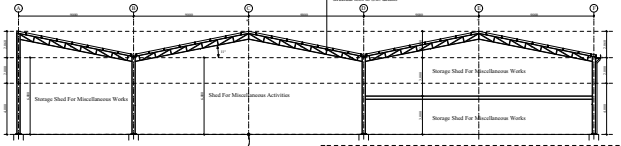
**SECTION B - B Scale 1:50**

Slab No.	Slab Thickness (mm)	Slab Area (sqm)	Volume (cu m)	Weight (kN)
1	100	100	10	240
2	100	100	10	240
3	100	100	10	240
4	100	100	10	240
5	100	100	10	240
6	100	100	10	240
7	100	100	10	240
8	100	100	10	240
9	100	100	10	240
10	100	100	10	240

# GROUND FLOOR PLAN

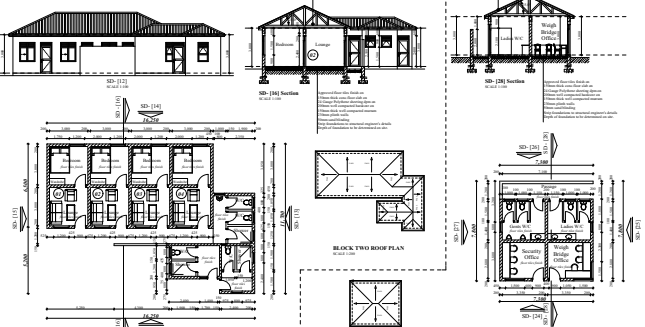


**ROOF CONSTRUCTION**  
 Deck: 2x8 Joists  
 Gable: 7/8" galvanized corrugated roofing insulation on 1/2" OSB  
 Other: 15mm timber girth joists on 100x100mm timber posts on 100x100mm timber wall plates on 100x100mm timber wall plates.



**ROOF CONSTRUCTION**  
 Deck: 2x8 Joists  
 Gable: 7/8" galvanized corrugated roofing insulation on 1/2" OSB  
 Other: 15mm timber girth joists on 100x100mm timber posts on 100x100mm timber wall plates on 100x100mm timber wall plates.

**ROOF CONSTRUCTION**  
 Deck: 2x8 Joists  
 Gable: 7/8" galvanized corrugated roofing insulation on 1/2" OSB  
 Other: 15mm timber girth joists on 100x100mm timber posts on 100x100mm timber wall plates on 100x100mm timber wall plates.



**ROOF CONSTRUCTION**  
 Deck: 2x8 Joists  
 Gable: 7/8" galvanized corrugated roofing insulation on 1/2" OSB  
 Other: 15mm timber girth joists on 100x100mm timber posts on 100x100mm timber wall plates on 100x100mm timber wall plates.

**ROOF CONSTRUCTION**  
 Deck: 2x8 Joists  
 Gable: 7/8" galvanized corrugated roofing insulation on 1/2" OSB  
 Other: 15mm timber girth joists on 100x100mm timber posts on 100x100mm timber wall plates on 100x100mm timber wall plates.

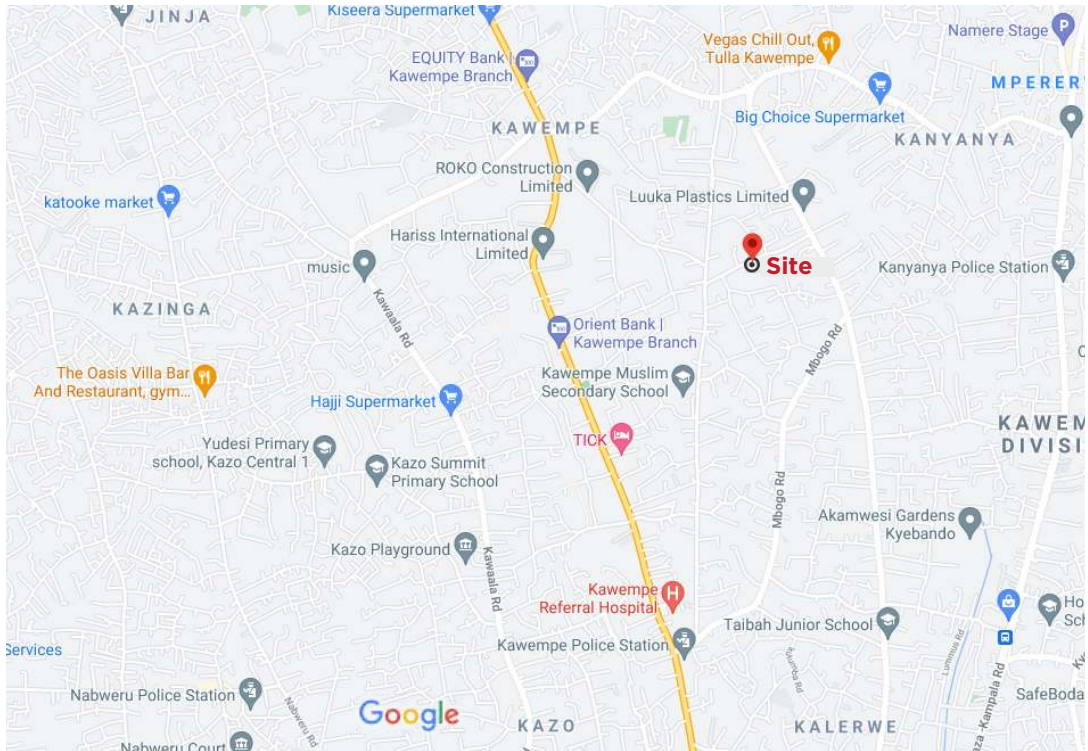
SIDE VIEW



AERIAL VIEW



## LOCATION MAP



Map data ©2021 500 m

### SURROUNDING AREAS:-

- ★ Roko Construction Ltd
- ★ Lukka Plastics
- ★ Pan Afric Impex
- ★ Hariss International (Riham)

### FOR MORE INFORMATION CONTACT

Hillary: 0705-066655, William: 0702-374 754, Gaurang: 0759-130137  
Email: sales@henleyuganda.com , gaurang@picfare.com